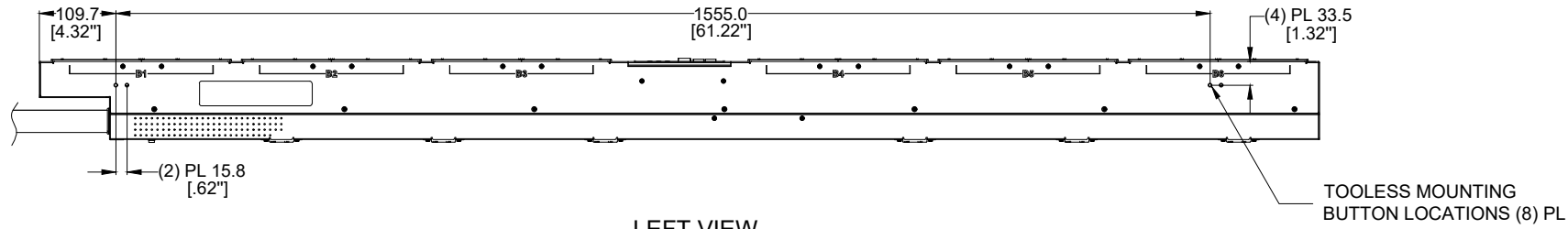
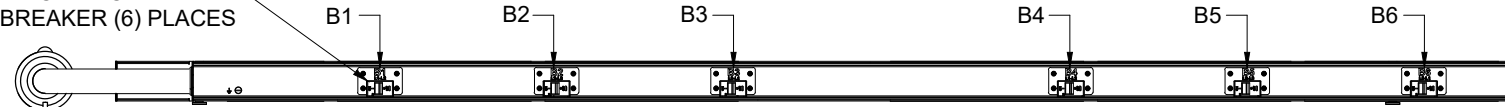


THIS COPY IS PROVIDED ON A RESTRICTED BASIS AND IS NOT TO BE USED IN ANY WAY DETRIMENTAL TO THE INTERESTS OF PANDUIT CORP.

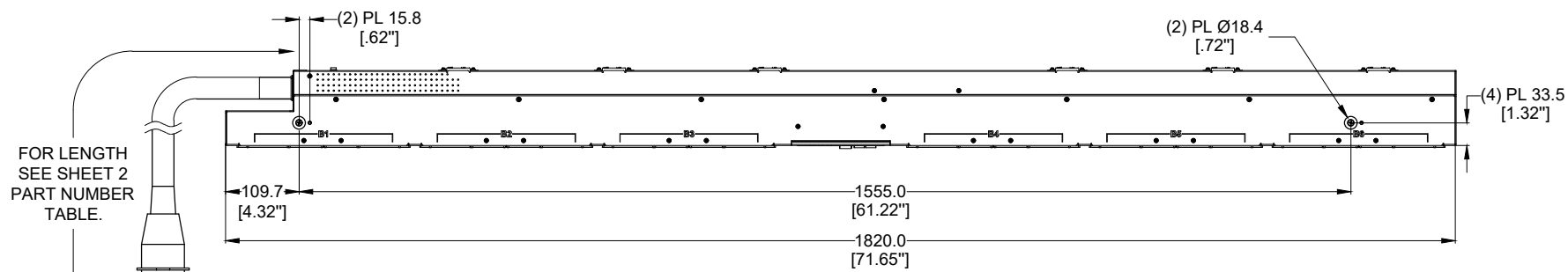
PANDUIT P/N	WEIGHT
P48G21M-XYZ	SEE SHEET 2



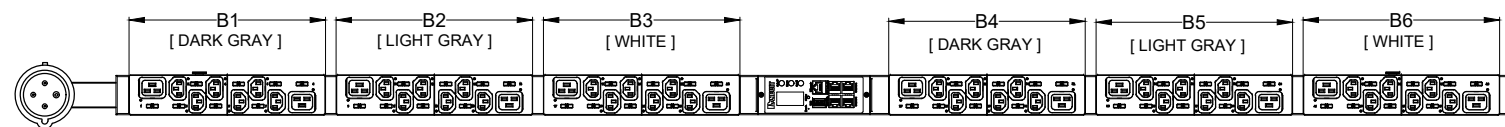
20 AMP, DOUBLE - POLE
ELECTRO MECHANICAL
SWITCH / BREAKER (6) PLACES



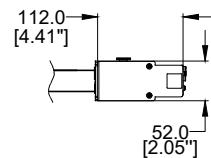
REAR VIEW



RIGHT VIEW



FRONT VIEW



BOTTOM VIEW

SPECIFICATION:

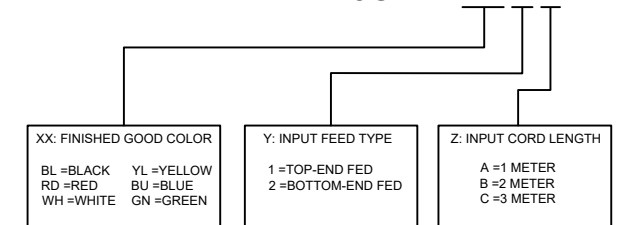
- STANDARD:
 - UNIT TYPE: MONITORED & SWITCHED PER OUTLET
 - ORIENTATION: VERTICAL, 0U FULL, 2-SIDED
 - OUTLET QTY & TYPE: (36)C13, (12) C19
 - INPUT VOLTAGE: 200-240VAC
 - INPUT CURRENT: 60A (48A DERATED)
 - BREAKER QTY & TYPE: (6)20AMP, DOUBLE-POLE
 - INPUT PHASE: THREE-PHASE DELTA
 - RATED POWER: 17.3kVA
 - INPUT PLUG: IEC 60309 3P+E 9H 60A
 - INPUT POWER CORD: SEE SHEET 2 FOR PART NUMBER TABLE
 - REGULATORY STANDARD: RoHS COMPLIANT
- ADDITIONAL: NONE
- ACCESSORIES: (1) QUICK-START GUIDE

NOTES:

- PRIMARY DIMENSIONS ARE IN MILLIMETERS. SECONDARY DIMENSION ARE IN [INCHES] .
- INSTALLATION SHALL COMPLY WITH ALL APPLICABLE NATIONAL, STATE, AND LOCAL CODES .
- VISIT OUR ON-LINE CATALOG AT WWW.PANDUIT.COM FOR A CURRENT LIST OF PRODUCTS APPLICABLE FOR USE WITH THIS PART .
- FOR FULL PRODUCT FUNCTIONALITY REFER TO USER MANUAL .
- DRAWING VIEWS SHOW THE INPUT CORD IN THE "TOP END FED" CONFIGURATION

IDENTIFICATION

FOR FINISHED GOOD PART NUMBER & DESCRIPTION TABLE SEE SHEET 2 CONFIGURABLE PART NUMBERS: **P48G21M-XX Y Z**



PLUG/RECEPTACLE BLOCK



PLUG
IEC 60309, 3P 4W, 9H
IP44 (SPASHPROOF)
60A, 250V, 3 - PHASE MAX RATED INPUT
48A DERATED



RECEPTACLES
IEC 60320/C19
16A, 250V MAX RATED OUTPUT



RECEPTACLES
IEC 60320/C13
10A, 250V MAX RATED OUTPUT

REV	DATE	BY	CHK	APR	DESCRIPTION	ECN
02A	06/07/2018	JF.YU	MIM	JAWI	ADDED SHEET 2 WITH CONFIGURABLE PART NUMBER TABLE AND DESCRIPTION UPDATED IDENTIFICATION TO INCLUDE CONFIGURABLE OPTION DE-CODER UPDATED CIRCUIT BREAKER LABELS WITH ROTATED TEXT	P48G21M
01A	09/11/2017	GEORGE	MIM	EDM	INITIAL RELEASE	P48G21M

WE ASK THAT YOU CHECK FULLY THE DIMENSIONS, NOTES, AND SIGN THE CLIENT SIGNATURE BOX. THE JOB WILL NOT PROGRESS WITHOUT SIGNED APPROVAL. PLEASE DO NOT DELAY IN RETURNING PROOF AS IT WILL AFFECT DELIVERY		SIGN	DATE	PRINT
TITLE: INTELLIGENT SERIES PDU P48G21M-XYZ CUSTOMER DRAWING				
ITEM REVISION NAME:		PANDUIT		
DATASHEET FILE NAME:				
UNLESS OTHERWISE SPECIFIED DIMENSIONAL TOLERANCE ARE: mm [IN]			MATERIAL/COLOR: N/A	
Tolerance(mm) 04<=50 ±0.5 50<=250 ±1.0 250<=500 ±1.5 500<=1000 ±2.5 1000<=2000 ±4.0			DRAWING NUMBER: P48G21M_DC	
DRAWN BY: GEORGE	DATE: 09/11/2017	CHK: SEAN	SCALE: NONE	SHT 1 OF 2

THIS COPY IS PROVIDED ON A RESTRICTED BASIS AND IS NOT TO BE USED IN ANY WAY DETRIMENTAL TO THE INTERESTS OF PANDUIT CORP.

FINISHED GOOD PART NUMBER	FINISHED GOOD DESCRIPTION	COLOR	INPUT CORD LENGTH	WEIGHT
P48G21M	VERTICAL,(36) C13,(12) C19,MONITORED & SWITCHED PER OUTLET,200-240V/60A/THREE-PHASE DELTA , TOP-END FED, 3 METER INPUT CORD, BLACK	BLACK (RAL 9005)	3M(+254MM-127MM) 10'[+10"/-5"]	16.5kg
P48G21M-BL1A	VERTICAL,(36) C13,(12) C19,MONITORED & SWITCHED PER OUTLET,200-240V/60A/THREE-PHASE DELTA , TOP-END FED, 1 METER INPUT CORD, BLACK	BLACK (RAL 9005)	1M(+178MM-89MM) 3.3'[+7"/-3.5"]	13.9kg
P48G21M-BL1B	VERTICAL,(36) C13,(12) C19,MONITORED & SWITCHED PER OUTLET,200-240V/60A/THREE-PHASE DELTA , TOP-END FED, 2 METER INPUT CORD, BLACK	BLACK (RAL 9005)	2M(+178MM-89MM) 6.5'[+7"/-3.5"]	15.2kg
P48G21M-RD1A	VERTICAL,(36) C13,(12) C19,MONITORED & SWITCHED PER OUTLET,200-240V/60A/THREE-PHASE DELTA , TOP-END FED, 1 METER INPUT CORD, RED	RED (RAL 3020)	1M(+178MM-89MM) 3.3'[+7"/-3.5"]	13.9kg
P48G21M-RD1B	VERTICAL,(36) C13,(12) C19,MONITORED & SWITCHED PER OUTLET,200-240V/60A/THREE-PHASE DELTA , TOP-END FED, 2 METER INPUT CORD, RED	RED (RAL 3020)	2M(+178MM-89MM) 6.5'[+7"/-3.5"]	15.2kg
P48G21M-RD1C	VERTICAL,(36) C13,(12) C19,MONITORED & SWITCHED PER OUTLET,200-240V/60A/THREE-PHASE DELTA , TOP-END FED, 3 METER INPUT CORD, RED	RED (RAL 3020)	3M(+254MM-127MM) 10'[+10"/-5"]	16.5kg
P48G21M-WH1A	VERTICAL,(36) C13,(12) C19,MONITORED & SWITCHED PER OUTLET,200-240V/60A/THREE-PHASE DELTA , TOP-END FED, 1 METER INPUT CORD, WHITE	WHITE (RAL 9003)	1M(+178MM-89MM) 3.3'[+7"/-3.5"]	13.9kg
P48G21M-WH1B	VERTICAL,(36) C13,(12) C19,MONITORED & SWITCHED PER OUTLET,200-240V/60A/THREE-PHASE DELTA , TOP-END FED, 2 METER INPUT CORD, WHITE	WHITE (RAL 9003)	2M(+178MM-89MM) 6.5'[+7"/-3.5"]	15.2kg
P48G21M-WH1C	VERTICAL,(36) C13,(12) C19,MONITORED & SWITCHED PER OUTLET,200-240V/60A/THREE-PHASE DELTA , TOP-END FED, 3 METER INPUT CORD, WHITE	WHITE (RAL 9003)	3M(+254MM-127MM) 10'[+10"/-5"]	16.5kg
P48G21M-YL1A	VERTICAL,(36) C13,(12) C19,MONITORED & SWITCHED PER OUTLET,200-240V/60A/THREE-PHASE DELTA , TOP-END FED, 1 METER INPUT CORD, YELLOW	YELLOW (RAL 1023)	1M(+178MM-89MM) 3.3'[+7"/-3.5"]	13.9kg
P48G21M-YL1B	VERTICAL,(36) C13,(12) C19,MONITORED & SWITCHED PER OUTLET,200-240V/60A/THREE-PHASE DELTA , TOP-END FED, 2 METER INPUT CORD, YELLOW	YELLOW (RAL 1023)	2M(+178MM-89MM) 6.5'[+7"/-3.5"]	15.2kg
P48G21M-YL1C	VERTICAL,(36) C13,(12) C19,MONITORED & SWITCHED PER OUTLET,200-240V/60A/THREE-PHASE DELTA , TOP-END FED, 3 METER INPUT CORD, YELLOW	YELLOW (RAL 1023)	3M(+254MM-127MM) 10'[+10"/-5"]	16.5kg
P48G21M-BU1A	VERTICAL,(36) C13,(12) C19,MONITORED & SWITCHED PER OUTLET,200-240V/60A/THREE-PHASE DELTA , TOP-END FED, 1 METER INPUT CORD, BLUE	BLUE (RAL 5005)	1M(+178MM-89MM) 3.3'[+7"/-3.5"]	13.9kg
P48G21M-BU1B	VERTICAL,(36) C13,(12) C19,MONITORED & SWITCHED PER OUTLET,200-240V/60A/THREE-PHASE DELTA , TOP-END FED, 2 METER INPUT CORD, BLUE	BLUE (RAL 5005)	2M(+178MM-89MM) 6.5'[+7"/-3.5"]	15.2kg
P48G21M-BU1C	VERTICAL,(36) C13,(12) C19,MONITORED & SWITCHED PER OUTLET,200-240V/60A/THREE-PHASE DELTA , TOP-END FED, 3 METER INPUT CORD, BLUE	BLUE (RAL 5005)	3M(+254MM-127MM) 10'[+10"/-5"]	16.5kg
P48G21M-GN1A	VERTICAL,(36) C13,(12) C19,MONITORED & SWITCHED PER OUTLET,200-240V/60A/THREE-PHASE DELTA , TOP-END FED, 1 METER INPUT CORD, GREEN	GREEN (RAL 6001)	1M(+178MM-89MM) 3.3'[+7"/-3.5"]	13.9kg
P48G21M-GN1B	VERTICAL,(36) C13,(12) C19,MONITORED & SWITCHED PER OUTLET,200-240V/60A/THREE-PHASE DELTA , TOP-END FED, 2 METER INPUT CORD, GREEN	GREEN (RAL 6001)	2M(+178MM-89MM) 6.5'[+7"/-3.5"]	15.2kg
P48G21M-GN1C	VERTICAL,(36) C13,(12) C19,MONITORED & SWITCHED PER OUTLET,200-240V/60A/THREE-PHASE DELTA , TOP-END FED, 3 METER INPUT CORD, GREEN	GREEN (RAL 6001)	3M(+254MM-127MM) 10'[+10"/-5"]	16.5kg
P48G21M-BL2A	VERTICAL,(36) C13,(12) C19,MONITORED & SWITCHED PER OUTLET,200-240V/60A/THREE-PHASE DELTA , BOTTOM-END FED, 1 METER INPUT CORD, BLACK	BLACK (RAL 9005)	1M(+178MM-89MM) 3.3'[+7"/-3.5"]	13.9kg
P48G21M-BL2B	VERTICAL,(36) C13,(12) C19,MONITORED & SWITCHED PER OUTLET,200-240V/60A/THREE-PHASE DELTA , BOTTOM-END FED, 2 METER INPUT CORD, BLACK	BLACK (RAL 9005)	2M(+178MM-89MM) 6.5'[+7"/-3.5"]	15.2kg
P48G21M-BL2C	VERTICAL,(36) C13,(12) C19,MONITORED & SWITCHED PER OUTLET,200-240V/60A/THREE-PHASE DELTA , BOTTOM-END FED, 3 METER INPUT CORD, BLACK	BLACK (RAL 9005)	3M(+254MM-127MM) 10'[+10"/-5"]	16.5kg
P48G21M-RD2A	VERTICAL,(36) C13,(12) C19,MONITORED & SWITCHED PER OUTLET,200-240V/60A/THREE-PHASE DELTA , BOTTOM-END FED, 1 METER INPUT CORD, RED	RED (RAL 3020)	1M(+178MM-89MM) 3.3'[+7"/-3.5"]	13.9kg
P48G21M-RD2B	VERTICAL,(36) C13,(12) C19,MONITORED & SWITCHED PER OUTLET,200-240V/60A/THREE-PHASE DELTA , BOTTOM-END FED, 2 METER INPUT CORD, RED	RED (RAL 3020)	2M(+178MM-89MM) 6.5'[+7"/-3.5"]	15.2kg
P48G21M-RD2C	VERTICAL,(36) C13,(12) C19,MONITORED & SWITCHED PER OUTLET,200-240V/60A/THREE-PHASE DELTA , BOTTOM-END FED, 3 METER INPUT CORD, RED	RED (RAL 3020)	3M(+254MM-127MM) 10'[+10"/-5"]	16.5kg
P48G21M-WH2A	VERTICAL,(36) C13,(12) C19,MONITORED & SWITCHED PER OUTLET,200-240V/60A/THREE-PHASE DELTA , BOTTOM-END FED, 1 METER INPUT CORD, WHITE	WHITE (RAL 9003)	1M(+178MM-89MM) 3.3'[+7"/-3.5"]	13.9kg
P48G21M-WH2B	VERTICAL,(36) C13,(12) C19,MONITORED & SWITCHED PER OUTLET,200-240V/60A/THREE-PHASE DELTA , BOTTOM-END FED, 2 METER INPUT CORD, WHITE	WHITE (RAL 9003)	2M(+178MM-89MM) 6.5'[+7"/-3.5"]	15.2kg
P48G21M-WH2C	VERTICAL,(36) C13,(12) C19,MONITORED & SWITCHED PER OUTLET,200-240V/60A/THREE-PHASE DELTA , BOTTOM-END FED, 3 METER INPUT CORD, WHITE	WHITE (RAL 9003)	3M(+254MM-127MM) 10'[+10"/-5"]	16.5kg
P48G21M-YL2A	VERTICAL,(36) C13,(12) C19,MONITORED & SWITCHED PER OUTLET,200-240V/60A/THREE-PHASE DELTA , BOTTOM-END FED, 1 METER INPUT CORD, YELLOW	YELLOW (RAL 1023)	1M(+178MM-89MM) 3.3'[+7"/-3.5"]	13.9kg
P48G21M-YL2B	VERTICAL,(36) C13,(12) C19,MONITORED & SWITCHED PER OUTLET,200-240V/60A/THREE-PHASE DELTA , BOTTOM-END FED, 2 METER INPUT CORD, YELLOW	YELLOW (RAL 1023)	2M(+178MM-89MM) 6.5'[+7"/-3.5"]	15.2kg
P48G21M-YL2C	VERTICAL,(36) C13,(12) C19,MONITORED & SWITCHED PER OUTLET,200-240V/60A/THREE-PHASE DELTA , BOTTOM-END FED, 3 METER INPUT CORD, YELLOW	YELLOW (RAL 1023)	3M(+254MM-127MM) 10'[+10"/-5"]	16.5kg
P48G21M-BU2A	VERTICAL,(36) C13,(12) C19,MONITORED & SWITCHED PER OUTLET,200-240V/60A/THREE-PHASE DELTA , BOTTOM-END FED, 1 METER INPUT CORD, BLUE	BLUE (RAL 5005)	1M(+178MM-89MM) 3.3'[+7"/-3.5"]	13.9kg
P48G21M-BU2B	VERTICAL,(36) C13,(12) C19,MONITORED & SWITCHED PER OUTLET,200-240V/60A/THREE-PHASE DELTA , BOTTOM-END FED, 2 METER INPUT CORD, BLUE	BLUE (RAL 5005)	2M(+178MM-89MM) 6.5'[+7"/-3.5"]	15.2kg
P48G21M-BU2C	VERTICAL,(36) C13,(12) C19,MONITORED & SWITCHED PER OUTLET,200-240V/60A/THREE-PHASE DELTA , BOTTOM-END FED, 3 METER INPUT CORD, BLUE	BLUE (RAL 5005)	3M(+254MM-127MM) 10'[+10"/-5"]	16.5kg
P48G21M-GN2A	VERTICAL,(36) C13,(12) C19,MONITORED & SWITCHED PER OUTLET,200-240V/60A/THREE-PHASE DELTA , BOTTOM-END FED, 1 METER INPUT CORD, GREEN	GREEN (RAL 6001)	1M(+178MM-89MM) 3.3'[+7"/-3.5"]	13.9kg
P48G21M-GN2B	VERTICAL,(36) C13,(12) C19,MONITORED & SWITCHED PER OUTLET,200-240V/60A/THREE-PHASE DELTA , BOTTOM-END FED, 2 METER INPUT CORD, GREEN	GREEN (RAL 6001)	2M(+178MM-89MM) 6.5'[+7"/-3.5"]	15.2kg
P48G21M-GN2C	VERTICAL,(36) C13,(12) C19,MONITORED & SWITCHED PER OUTLET,200-240V/60A/THREE-PHASE DELTA , BOTTOM-END FED, 3 METER INPUT CORD, GREEN	GREEN (RAL 6001)	3M(+254MM-127MM) 10'[+10"/-5"]	16.5kg

B

B

A

A

WE ASK THAT YOU CHECK FULLY THE DIMENSIONS, NOTES, AND SIGN THE CLIENT SIGNATURE BOX. THE JOB WILL NOT PROGRESS WITHOUT SIGNED APPROVAL. PLEASE DO NOT DELAY IN RETURNING PROOF AS IT WILL AFFECT DELIVERY

SIGN _____
DATE _____
PRINT _____

TITLE: INTELLIGENT SERIES PDU
P48G21M-XYZ
CUSTOMER DRAWING

ITEM REVISION NAME: _____
DATASHEET FILE NAME: _____

UNLESS OTHERWISE SPECIFIED
DIMENSIONAL TOLERANCE ARE: mm [IN]

Tolerance(mm)
0<L<50 ±0.5
50<L<250 ±1.0
250<L<500 ±1.5
500<L<1000 ±2.5
1000<L<2000 ±4.0

MATERIAL/COLOR: N/A

DRAWING NUMBER: P48G21M_DC

THIRD ANGLE PROJECTION

DRAWN BY: GEORGE DATE: 09/11/2017 CHK: SEAN SCALE: NONE

SHT 2 OF 2 SCALE: B

REV	DATE	BY	CHK	APR	DESCRIPTION	ECN
02A	06/07/2018	JF.YU	MIM	JAWI	ADDED SHEET 2 WITH CONFIGURABLE PART NUMBER TABLE AND DESCRIPTION UPDATED IDENTIFICATION TO INCLUDE CONFIGURABLE OPTION DE-CODER UPDATED CIRCUIT BREAKER LABELS WITH ROTATED TEXT	P48G21M
01A	09/11/2017	GEORGE	MIM	EDM	INITIAL RELEASE	P48G21M